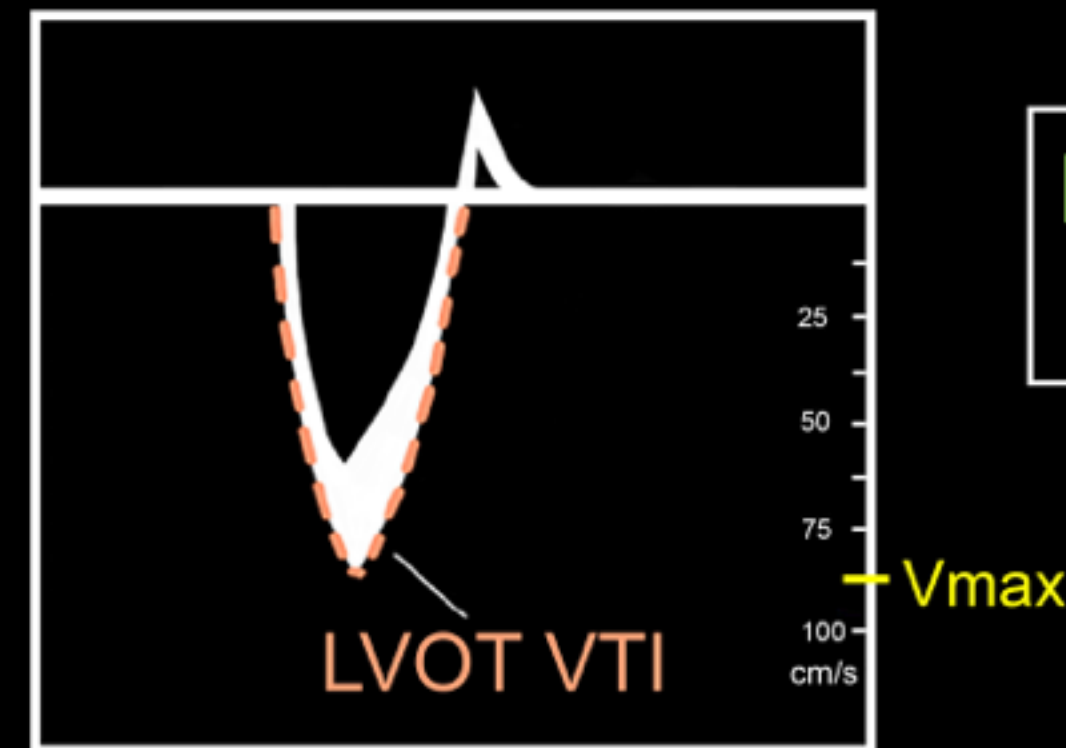
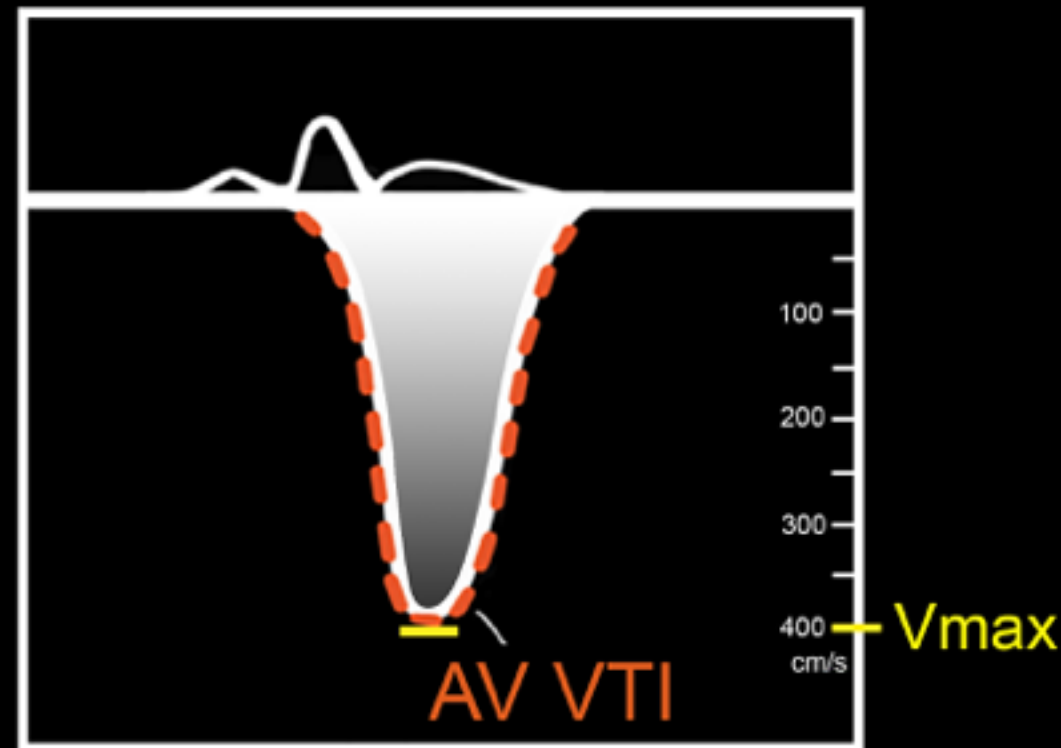
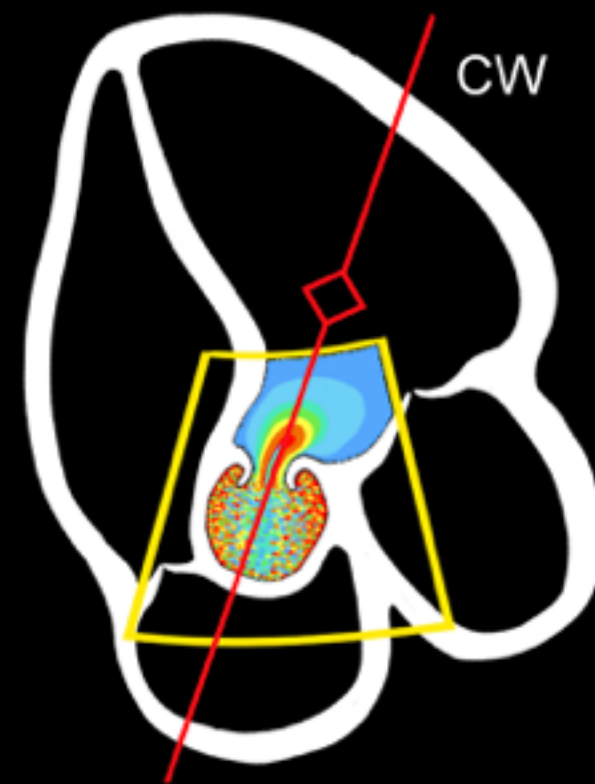


# Aortic Stenosis

- 1 - Calculate LVOT Area    2 - Measure Aortic Valve VTI    3- Measure LVOT VTI    4 - Calculate Aortic Valve Area



$$\text{Dimensionless Index} = \frac{\text{LVOT VTI}}{\text{AV VTI}}$$

Aortic Valve Area

$$\text{Dimensionless Index} \times \text{LVOT Area}$$

$$\text{LVOT Area} = \pi \left( \frac{\text{LVOT Diameter}}{2} \right)^2$$

Grading Aortic Stenosis

References